



Catenin- β (phospho Tyr489) Polyclonal Antibody

Catalog No	YP-Ab-16899
Isotype	IgG
Reactivity	Human;Mouse;Rat;Monkey
Applications	WB;IHC;IF;ELISA
Gene Name	CTNNB1 CTNNB OK/SW-cl.35 PRO2286
Protein Name	Catenin- β ;b-catenin;Beta catenin;Beta-catenin;Cadherin associated protein;Catenin (cadherin associated protein), beta 1, 88 kDa;Catenin beta 1;Catenin beta-1;CATNB;CHBCAT;CTNB1_HUMAN;CTNNB;CTNNB1;DKFZ
Immunogen	The antiserum was produced against synthesized peptide derived from human Catenin-beta around the phosphorylation site of Tyr489. AA range:455-504
Specificity	Phospho-Catenin- β (Y489) Polyclonal Antibody detects endogenous levels of Catenin- β protein only when phosphorylated at Y489.
Formulation	Liquid in PBS containing 50% glycerol, 0.5% BSA and 0.02% sodium azide.
Source	Polyclonal, Rabbit,IgG
Purification	The antibody was affinity-purified from rabbit antiserum by affinity-chromatography using epitope-specific immunogen.
Dilution	WB: 1/500 - 1/2000. IHC: 1/100 - 1/300. ELISA: 1/40000.. IF 1:50-200
Concentration	1 mg/ml
Purity	$\geq 90\%$
Storage Stability	-20°C/1 year
Synonyms	CTNNB1; CTNNB; OK/SW-cl.35; Catenin beta-1; Beta-catenin
Observed Band	92kD
Cell Pathway	Cytoplasm . Nucleus . Cytoplasm, cytoskeleton . Cell junction, adherens junction . Cell junction . Cell membrane . Cytoplasm, cytoskeleton, microtubule organizing center, centrosome. Cytoplasm, cytoskeleton, spindle pole. Cell junction, synapse . Cytoplasm, cytoskeleton, cilium basal body . Colocalized with RAPGEF2 and TJP1 at cell-cell contacts (By similarity). Cytoplasmic when it is unstabilized (high level of phosphorylation) or bound to CDH1. Translocates to the nucleus when it is stabilized (low level of phosphorylation). Interaction with GLIS2 and MUC1 promotes nuclear translocation. Interaction with EMD inhibits nuclear localization. The majority of beta-catenin is localized to the cell membrane. In interphase, colocalizes with CROCC between CEP250 puncta at the proximal end of cent
Tissue Specificity	Expressed in several hair follicle cell types: basal and peripheral matrix cells, and cells of the outer and inner root sheaths. Expressed in colon. Present in cortical neurons (at protein level). Expressed in breast cancer tissues (at protein level) (PubMed:29367600).
Function	disease:A chromosomal rearrangement involving CTNNB1 may be a cause of salivary gland pleiomorphic adenomas (PA) [181030]. Pleiomorphic adenomas are the most common benign epithelial tumors of the salivary gland. Translocation



t(3;8)(p21;q12) with PLAG1. disease:Activating mutations in CTNNB1 have oncogenic activity resulting in tumor development. Somatic mutations are found in various tumor types, including colon cancers, ovarian and prostate carcinomas, hepatoblastoma (HB), hepatocellular carcinoma (HCC). HBs are malignant embryonal tumors mainly affecting young children in the first three years of life. disease:Defects in CTNNB1 are a cause of medulloblastoma (MDB) [MIM:155255]. MDB is a malignant, invasive embryonal tumor of the cerebellum with a preferential manifestation in children. disease:Defects in CTNNB1 are a cause of pilomatixoma (PTR) [MIM:132600]; a common benign skin tum

Background

The protein encoded by this gene is part of a complex of proteins that constitute adherens junctions (AJs). AJs are necessary for the creation and maintenance of epithelial cell layers by regulating cell growth and adhesion between cells. The encoded protein also anchors the actin cytoskeleton and may be responsible for transmitting the contact inhibition signal that causes cells to stop dividing once the epithelial sheet is complete. Finally, this protein binds to the product of the APC gene, which is mutated in adenomatous polyposis of the colon. Mutations in this gene are a cause of colorectal cancer (CRC), pilomatixoma (PTR), medulloblastoma (MDB), and ovarian cancer. Alternative splicing results in multiple transcript variants. [provided by RefSeq, Aug 2016],

matters needing attention

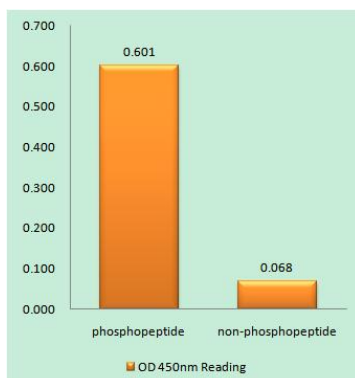
Avoid repeated freezing and thawing!

Usage suggestions

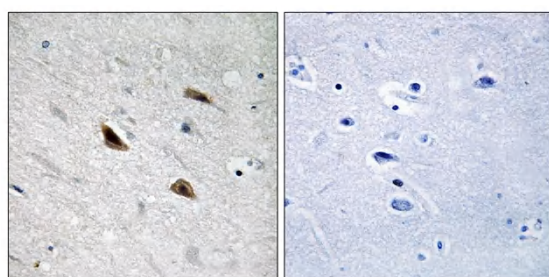
This product can be used in immunological reaction related experiments. For more information, please consult technical personnel.



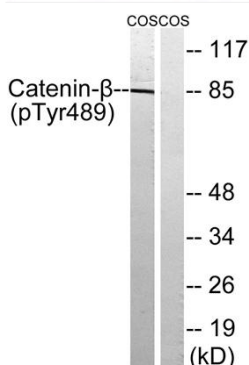
Products Images



Enzyme-Linked Immunosorbent Assay (Phospho-ELISA) for Immunogen Phosphopeptide (Phospho-left) and Non-Phosphopeptide (Phospho-right), using Catenin-beta (Phospho-Tyr489) Antibody



Immunohistochemistry analysis of paraffin-embedded human brain, using Catenin-beta (Phospho-Tyr489) Antibody. The picture on the right is blocked with the phospho peptide.



Western blot analysis of lysates from COS7 cells treated with UV 15', using Catenin-beta (Phospho-Tyr489) Antibody. The lane on the right is blocked with the phospho peptide.